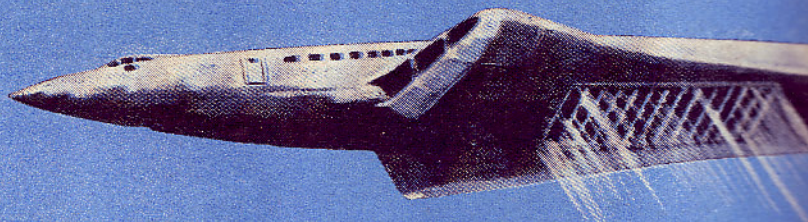
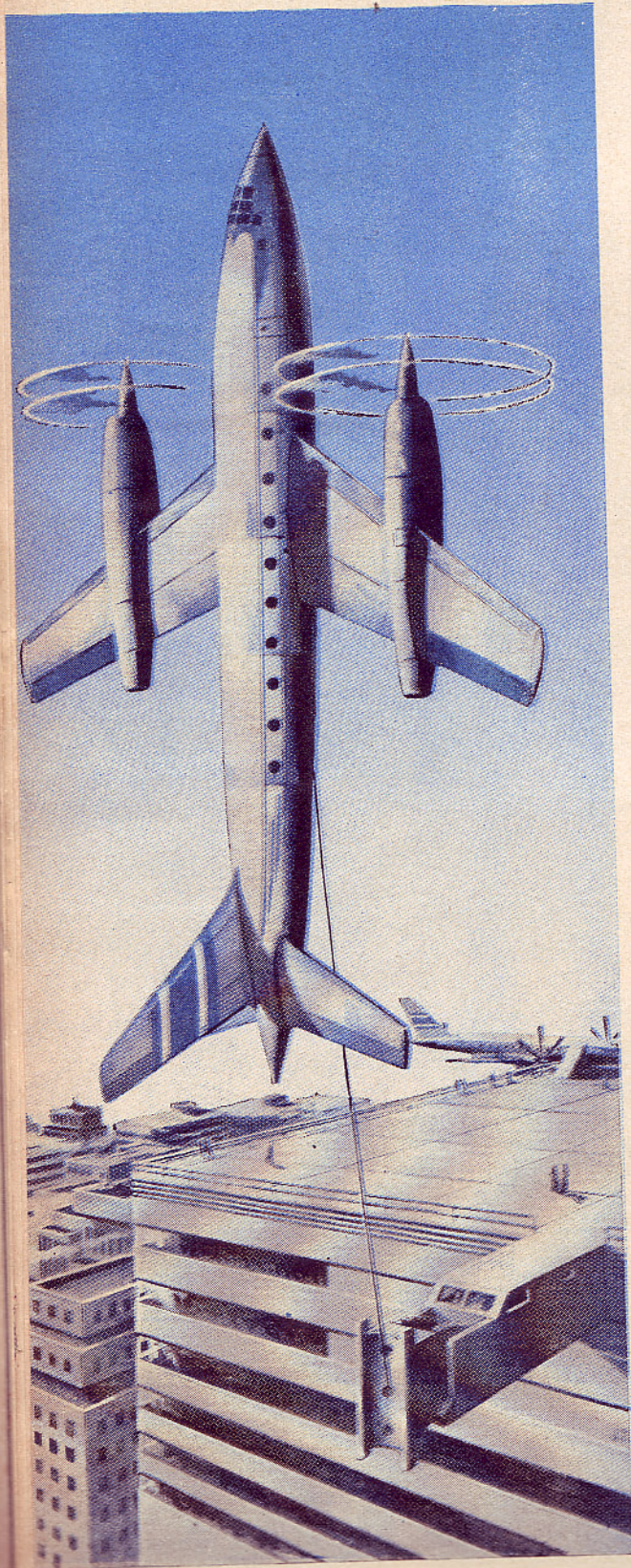
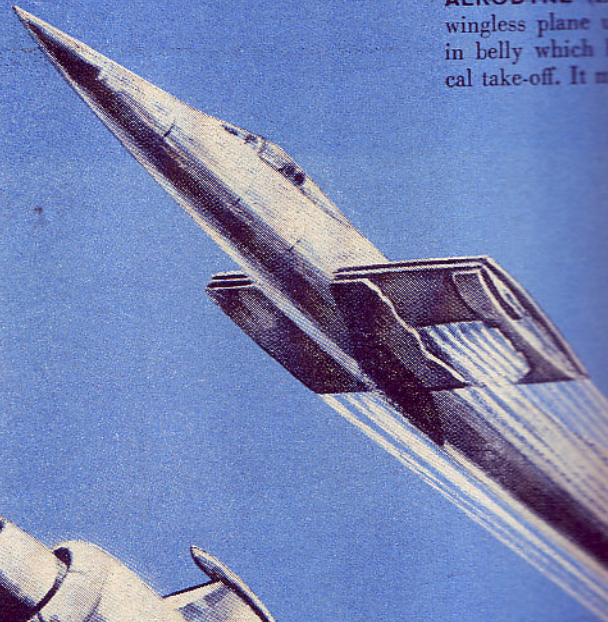


**FRENCH FLYING SAUCER**, a design by René Couzinet, rises vertically by means of the lift created by counterrotation of top and bottom surfaces. An underslung turbojet engine propels it horizontally. Pilot sits in bubble on top.



**AERODYNE** wingless plane in belly which allows vertical take-off. It



**RAMJET WIN** Madrid, Spain, at low take-off to become ram



**THE LEDUC RAMJET**, under construction in France, is a flying tube that serves as the plane's body and becomes a giant ramjet engine at high speeds. It uses jet engines in wings for take-off.



**VENETIAN-BLIND** tional Advisory Comm vents propeller blast de tractable vanes to lift pl